

New Generation Install Packers

Key Points – Differentiation:

- Profile: Round – 1400mm (55")
- Weight: 68 kg (150 lbs) fully equipped
- Configuration: 5 x hooks for safe handling
 - Integrated diverter pulleys
 - Integrated excess/relieve pressure valve
 - Integrated flange for sluice
 - Connection for blower hose
 - Connection for external compressor hose
 - Pressure relieve connection
 - Cable sleeve connection – adaptable to all cable types



This completely new developed install Packer system, is a critically important component for the professional and efficient GRP - UV cured lining industry. This system is applicable for all pipe profiles.

In comparison to the existing install packers in the market today, this completely **NEW** developed system, offers **significant** advantages:

- Using the example of a 1400mm (55") packer, this newly designed system (fully equipped version) weighs on 68kg (150lbs) and therefore is roughly **50% lighter** when compared to existing packers in the market.
- The significant weight reduction makes it so **much easier, faster and safer** to install.
- Significant reduction of **injury risk** as well as **strain** for the installers. Acc. to the German LasthandhabV regulation, the newly developed packer system would be considered risk group 2, when compared to risk group 4 for the existing types. This is very **significant** !
- An integrated and acc. to liner type pre-set **pressure relieve** valve – resulting in **risk reduction** and at the same time **increasing efficiency**.
- **Integrated** and **self-centering** diverter pulley. This is designed that the cable as well as the rope is guided professionally, always **aligned** with the cable sleeve.
- The separate positioning of a diverter pulley (except for indirect diversion) is therefore **no longer needed** - resulting in **risk reduction** and at the same time **increasing efficiency**.



Pressure relieve valve



Significant weight reduction



ProfiPacker with integrated pulleys in action



pulleys are always in-line

- The packer system is self centering – due to the significant weight reduction, even at minimal inflation pressure, the packer will “float” above ground. This also allows for installation in **constricted** areas.
- The overall installation due to the **reduced** weight is so much more efficient.



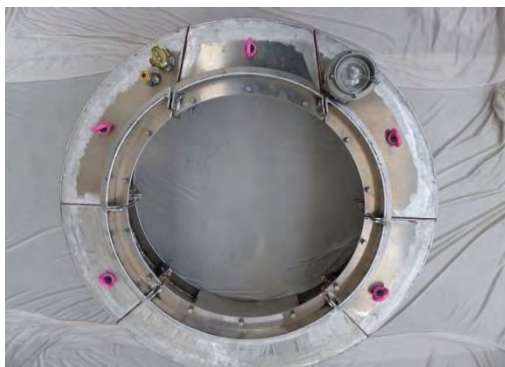
ProfiPacker “floats”



at only 47 mbar (refer to picture on the left)

- No need for **strenuous** and **excessive cutting** in difficult settings. This under consideration of **real site conditions** newly developed **ProfiPacker** system, allows it to be **dismantled** with a simple tool in a **non-destructive** way.
- This **system** results in very **significant time savings** of roughly **45 min. per side/packer**.

In addition, the **injury risk** and the **exposure** to the **dangerous dust** occurring during normal cutting is significantly **reduced/eliminated** – **This is BIG !!**



modular design **front side**
without cover



modular design **rear side** incl.
cover